



BOOTH

UNIVERSITY  
COLLEGE

2026

# VIEWBOOK

EDUCATION FOR A BETTER WORLD





# WELCOME!

**Booth University College is committed to providing Education for a Better World. Our approach to learning is anchored in academic excellence and based on a vision of hope, social justice, and mercy. We go beyond preparing you for a career. We prepare you to transform your own communities and the world.**

**17**

**Average  
class size  
for students**

**16:1**

**Student  
to faculty  
ratio**

**344**

**Student  
population**

## Mission Statement

William and Catherine Booth University College, a Christian university college rooted in The Salvation Army's Wesleyan theological tradition, brings together Christian faith, rigorous scholarship and a passion for service. The University College educates students to understand the complexities of our world, to develop the knowledge and skills necessary to be active contributors to society, and to know how Christian faith compels them to bring hope, social justice, and mercy into our world.



# Booth UC Student Journey

1

## EXPLORE OUR PROGRAMS

- Browse our available courses
- Check the program descriptions

## CONNECT WITH ADMISSIONS COUNSELLOR

- Start your application
- Upload required documents

2

3

## COMPLETE YOUR APPLICATION

- Explore scholarships, grants, and awards
- Check the program descriptions

## ENROLL IN YOUR CLASSES

- Attend orientation
- Start your academic journey

4

5

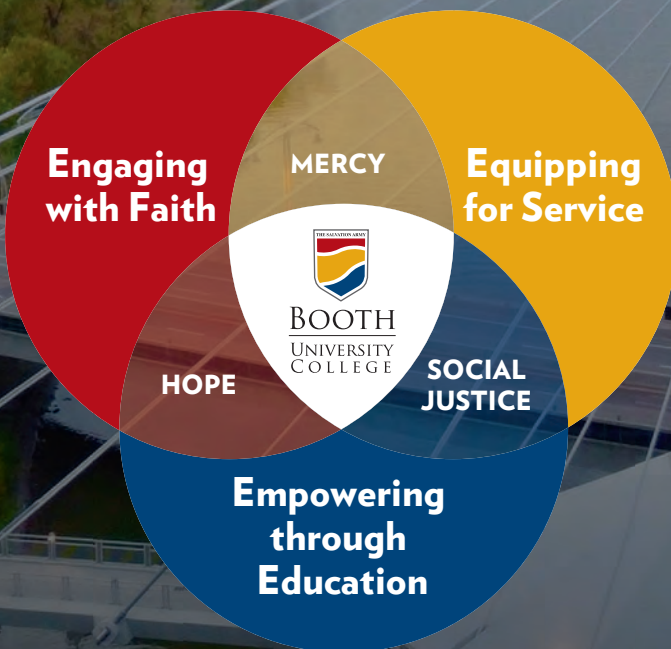
## CHANGE THE WORLD!

- Unlock your potential

Our Main Campus is located at 290 Vaughan Street. A warm, comfortable, and student-centered location, the 4-story building combines both historic and modern architecture.

Our Secondary Campus is located at Union Station, 123 Main Street (3rd Floor, South Tower)

Booth campuses provide ample classroom and office space, state-of-the-art technology and other amenities to maintain and elevate the high standards of education for which Booth UC is renowned.



*The heartbeat of Booth UC*

Booth UC exists to engage with faith, equip for service, and empower through education . . . so that hope is embodied, mercy is experienced, and social justice is expanded.

# PROGRAMS

## Bachelor of Social Work

Our Social Work program prepares students to facilitate change in individuals, families, groups, organizations, and communities, and is grounded in the realities of practice. A unique aspect of our program is small class sizes that allow students to complete learning activities that are more advanced. At Booth UC, we offer a demanding program with a strong focus on clinical practice.

### Program Streams:

- 4-year Social Work (direct entry)
- 2-year Social Work After-Degree

### What sets our Social Work program apart?

- 800+ hours of practicum experience
- Practicum placements
- Small classes

Booth UC's Bachelor of Social Work is an approved program of the Manitoba College of Social Workers (MCSW) for registration in the province of Manitoba. BSW graduates who register with the MCSW are eligible to take the Association of Social Work Boards (ASWB) licensing examination.



### CAREER OPPORTUNITIES:

*Counsellor, Case Manager, Mediator, Policy Analyst, Advocate and Facilitator Social workers practice in many settings: Schools, Hospitals, Rehabilitation Programs, Child Welfare Settings, Family Service Agencies, Criminal Justice Settings and Mental Health Organizations.*

### preBSW

Gain the entrance requirements you will need to enter the Bachelor of Social Work program. In the preBSW program, you will study our core curriculum and begin the introduction to social work classes and general electives. Once you have gained enough credits and met all admission requirements, you are ready to apply to the Bachelor of Social Work program as a preBSW student.

*Complete year one of preBSW to increase your GPA and gain enough credits to qualify to enter in year 2 of the 4-year BSW program (total of 4 years full-time studies)*

## BA



## English and Film Studies

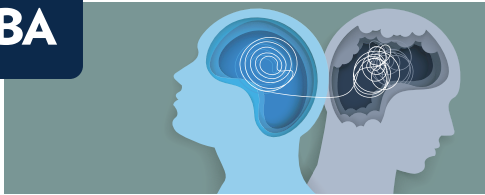
To study English and Film is to study people's stories, which ultimately helps us understand what our society values most at any given time. English majors can expect to take courses focusing on British, American, and Canadian literature, as well as other texts written in English. You will be encouraged to engage with and think critically about voices and experiences that have the potential to change the way you see and interact with the world.



### CAREER OPPORTUNITIES:

*Publishing, Filmmaking and Criticism, Government and Policy Work, Education, and Activism*



**BA**

## Psychology

A Bachelor of Arts in Psychology studies the human mind and behaviour, and is unique in many exciting ways. Our Psychology program addresses practical, social, cultural, and diversity issues with an added emphasis on ethics.



### OPTIONAL STREAMS:

**Core Psychology:** our core Bachelor of Arts in Psychology program.

**Community Mental Health:** focuses on social psychology, community psychology, social change, and neuroscience. Courses are streamlined toward critical counselling and intervention skills.



### APPLIED PSYCHOLOGY:

This stream focuses on the practical application of psychology and includes two internships.



### HONOURS PROGRAM:

Students complete an independent research project and thesis.



### CAREER OPPORTUNITIES:

Mental Health Services, Social Services, Health Services, and Correctional Services.

## Community and Urban Transformation

The Community and Urban Transformation (CUT) program at Booth UC allows you to analyze cities, urbanization, and the transformational experiences of urban life through a variety of disciplinary lenses to promote just, sustainable, and flourishing urban communities. CUT course content touches on issues specific to Winnipeg, Canada such as youth, poverty and homelessness, and the Indigenous experience. It also extends to national and global issues like international development and human rights.



### CAREER OPPORTUNITIES:

Social Services, Urban Studies, Criminal Justice, Community Development, Advocacy, Environmental Issues, Counselling, and Ministry

**BA****BA**

## Behavioural Sciences

Behavioural Sciences is an interdisciplinary program that combines perspectives from psychology and sociology to understand human behaviour and help people thrive at the individual and community levels. From neurons to nations, you'll get an understanding of human behaviour and the forces that drive us as people.



### CAREER OPPORTUNITIES:

*Urban Studies, Criminal Justice, Community Development and Counselling*



BA

## Religion

Students of religion at Booth UC will be introduced to key facets of Christianity (scripture, history, theology, practices) and other fascinating religions around the world. Our campus community welcomes people from all backgrounds, encourages diverse perspectives, and nurtures rich friendships. You will not only examine the human condition but also discover religious solutions to pressing human and global problems. You will come to appreciate the diversity, depth, and dynamism of religion.



### CAREER OPPORTUNITIES:

*Church Ministry, Teaching, Not-for-profit Administration, and Social Services*

Some graduates also go on to earn advanced degrees in religious studies and related disciplines such as Law, Education, Journalism, and Social Work

BA



## Interdisciplinary Studies

Interdisciplinary Studies is an open and flexible degree program where students combine subjects from two different disciplines, rather than majoring in just one. What makes it unique is the combination of diverse courses that cover many disciplines, critical thinking, and hands-on learning. As an Interdisciplinary Studies student, you will learn how to think critically about intricate, interconnected concepts and articulate an informed view of the world with an awareness for its complexity and diversity, and to do so with an appreciation for the Christian world view and a multidisciplinary perspective.



### CAREER OPPORTUNITIES:

*Government, Public Relations, Event Planning, Business, Banking, Retail Management, and Social Services*

*Interdisciplinary Studies also prepares you for further studies in programs like Law, Ministry, Journalism, and Education*

## Associate of Arts Degree

Expand your knowledge in the liberal arts. If you are looking for a shorter program that covers a breadth of topics, the Associate of Arts degree is a great place to start. The Associate of Arts degree helps you develop critical thinking and writing skills that will help you on any future path. Upon graduating, you may also continue to complete various Bachelor's at Booth UC.



### CAREER OPPORTUNITIES:

*Marketing Assistant, Assistant Retail Manager, Customer Service Representative, Administrative Assistant, and Bank Teller*

AA





**BBA**

## Bachelor of Business Administration

Given today's complex business world, there is a strong demand for skilled, knowledgeable, ethical, and engaged global business professionals. To meet this demand, and to prepare you to make a meaningful difference in the world, Booth UC's School of Business offers a unique, relevant, and flexible Business Administration degree.

### Bachelor of Business Administration 2+2 program with RRC Polytech

Booth UC offers a degree completion program in partnership with RRC Polytech. Students who complete a two-year Diploma in Business Administration at RRC Polytech can earn a BBA after two years at Booth UC. Our courses qualify as prerequisites for the Chartered Professional Accountants (CPA) Professional Education Program.



#### CAREER OPPORTUNITIES:

*Accounting and Finance, Human Resources, Marketing, Not-for-profit Management, Project Management, and Public Relations*

## Associate of Business Administration Degree

If you are looking for the knowledge and skills to help you enter the for-profit or non-profit sectors, then this degree may be for you. Also, if you are looking for experience to assist with starting your own business, then it is a good option. Upon graduating, you may also continue to complete your Bachelor of Business Administration degree.



#### CAREER OPPORTUNITIES:

*Management Trainee, Program Coordinator, various Administrative and Clerk Positions, Account Representatives, and Banking Customer Service Representatives*

**ABA**



# Programs at a Glance

PROGRAM	CREDENTIALS	MAJOR	*MINOR	EXPERIENTIAL LEARNING
SCHOOL OF HUMANITIES AND SOCIAL SCIENCES				
Psychology	Bachelor of Arts	4 years (120 credits)	Sociology, Buisness	Internship/Independent research project and thesis
Psychology (Community and Mental Health)	Bachelor of Arts	3 years (90 credits)	Sociology, Buisness	Internship
Community and Urban Transformation	Bachelor of Arts	4 years (120 credits)	Buisness, English	Urban Service Learning
Behavioural Sciences	Bachelor of Arts	3 years (90 credits) or 4 years (120 credits)	Buisness	Internship
Religion	Bachelor of Arts	3 years (90 credits) or 4 years (120 credits)	English, Film	Urban Service Learning
English and Film Studies	Bachelor of Arts	3 years (90 credits) or 4 years (120 credits)	Buisness, Psychology	Urban Service Learning
Interdisciplinary Studies	Bachelor of Arts	3 years (90 credits) or 4 years (120 credits)	Psychology, Sociology	Urban Service Learning
Associate of Arts	Associate of Arts	2 years (60 credits)	N/A	N/A
SCHOOL OF SOCIAL WORK				
High School Direct-Entry	Bachelor of Social Work	4 years (120 credits)	N/A	Field Placement
Transfer Entry	Bachelor of Social Work	4 years (120 credits)	N/A	Field Placement
After-Degree	Bachelor of Social Work	2 years (75 credits)	N/A	Field Placement
pre-BSW	None	1-2 years (30-60 credits)	N/A	N/A
SCHOOL OF BUSINESS				
Business Administration	Bachelor of Business Administration	3 years (90 credits) or 4 years (120 credits)	English, Film	Urban Service Learning
2+2 RRC Polytechnic Degree Completion	Bachelor of Business Administration	2 years (60 credits) RRC and then 2 years (60 credits) Booth UC	English, Film	Urban Service Learning
Associate of Business	Associate of Business	2 years (60 credits)	N/A	Urban Service Learning



All programs are offered in both Full-time and Part-time  
 Delivery methods: On Campus, Virtual, Online, and Blended  
 \*You must take 18 credits to complete a minor in a 4 year program



BOOTH  
 UNIVERSITY  
 COLLEGE

INTAKES	HIGH SCHOOL PROGRAM ENTRANCE REQUIREMENTS	TRANSFER ENTRANCE REQUIREMENTS
---------	-------------------------------------------	--------------------------------

Fall, Winter and Spring	5 credits at Grade 12 level, 65% average or better including English 40S and two other 40S credits from different subject areas	2.0/4.0 CGPA
Fall, Winter and Spring	5 credits at Grade 12 level, 65% average or better including English 40S and two other 40S credits from different subject areas	2.0/4.0 CGPA
Fall, Winter and Spring	5 credits at Grade 12 level, 65% average or better including English 40S and two other 40S credits from different subject areas	2.0/4.0 CGPA
Fall, Winter and Spring	5 credits at Grade 12 level, 65% average or better including English 40S and two other 40S credits from different subject areas	2.0/4.0 CGPA
Fall, Winter and Spring	5 credits at Grade 12 level, 65% average or better including English 40S and two other 40S credits from different subject areas	2.0/4.0 CGPA
Fall, Winter and Spring	5 credits at Grade 12 level, 65% average or better including English 40S and two other 40S credits from different subject areas	2.0/4.0 CGPA
Fall, Winter and Spring	5 credits at Grade 12 level, 65% average or better including English 40S and two other 40S credits from different subject areas	2.0/4.0 CGPA
Fall, Winter and Spring	5 credits at Grade 12 level, 65% average or better including English 40S and two other 40S credits from different subject areas	2.0/4.0 CGPA
Fall, Winter	5 credits at Grade 12 level, 80% average or better including English 40S and two other 40S credits from different subject areas. Resume, Personal Statement, and Reference Letter	N/A
Fall, Winter	N/A	2.5/4.0 CGPA, Resume, Personal Statement, & Reference Letters
Fall, Winter	N/A	2.5/4.0 CGPA, 2.5/4.0 Last 60 credits, Resume, Personal Statement, & Reference Letters
Fall, Winter and Spring	5 credits at Grade 12 level, 65% average or better including English 40S and two other 40S credits from different subject areas	2.0/4.0 CGPA
Fall, Winter and Spring	5 credits at Grade 12 level, 65% average or better including English 40S and two other 40S credits from different subject areas	2.0/4.0 CGPA
Fall, Winter and Spring	5 credits at Grade 12 level, 65% average or better including English 40S and two other 40S credits from different subject areas	2.0/4.0 CGPA
Fall, Winter and Spring	5 credits at Grade 12 level, 65% average or better including English 40S and two other 40S credits from different subject areas	2.0/4.0 CGPA



# Booth UC Student Supports

At Booth UC, we believe it is important to support the whole person—body, mind, and spirit! Below are some of the ways we help our students be their very best while studying at Booth UC.



## Academic Learning Centre

The Academic Learning Centre (ALC) is a free service for students who want to strengthen academic skills and learn effective strategies for achieving academic success. A team of tutors are available for meeting with students one-on-one as well as in group sessions or workshops. Students give our ALC team an 'A+' in helping them reach their academic goals at Booth UC!



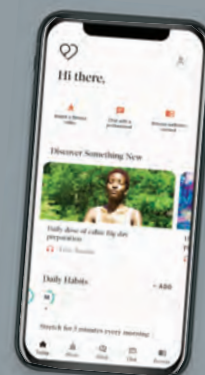
## Accessibility Services

Not all of us learn in the same way. Booth UC provides academic accommodations for students with physical or learning disabilities to help provide barrier-free access to Booth UC degree programs. If you have a diagnosed disability or are interested in knowing more about the Accessibility Services program at Booth UC, we can talk about supports that are right for you.



## Health Insurance Plans for All Students

We know that our students will not be able to succeed when they are not feeling well. This is why we offer both basic emergency healthcare coverage for international students as well as supplemental health and dental coverage for all students. These plans make sure that our students have access to Manitoba health care when they need it and also have financial support for accessing additional health services and dental care not covered by public health or emergency health insurance plans. Additionally, students have access to virtual doctor assistance for minor concerns and prescriptions. All plans have opt-out options for students with existing similar healthcare coverage plans\*.



\*Check website for details: <https://www.mystudentplan.ca/booth/en/home>



## Community Events & Activities

While students come to Booth UC to complete an academic degree program, we know that a university experience is so much more than what happens in the classroom! You will make friendships, pursue common interests, and gain valuable experience through the many different events and activities throughout the year. Whether you want to get involved in promoting social justice initiatives, join a recreational sport challenge, learn a new skill, or find a new special interest, you'll find others to join you along the way. It's our community that makes Booth UC a special place to be!



## Student Council

Students are the best advocates for student interests at Booth UC! This is why Booth UC Student Council exists, to foster a vibrant, engaged, and connected community among Booth UC students. All through the year, students elected to Student Council are working to create opportunities for students to celebrate and engage with our campus community. There are so many ways to be involved at Booth UC!





## International Student Supports

Booth UC international students are advised by a staff member. Advising sessions can take place either in person or through virtual conferencing. International students can also connect with each other and useful resources and support through an online International Student Support group in Populi, a What'sApp group chat, and various campus events throughout the year. There are many ways to get involved as an international student at Booth UC!



## Mental Health Supports

University can be challenging and we appreciate the importance of supporting mental health to ensure you're up for the task. This is why Booth UC students have free access to virtual counselling services any time of the day, any day of the year. We also provide referrals for affordable in-person counselling options in Winnipeg, as well as lots of resources and supplemental mental health support.



## Spiritual Care and Faith Community

As a Christian higher education institution, Booth UC believes that faith is foundational to our outlook on learning, lifestyle and spiritual care. Our community gathers regularly during the week for times of worship, celebration, and reflection. Our spiritual care services are provided for students of any faith background and offer a safe and welcoming environment to talk about concerns in a faith-centered context.







Number of print and  
e-books in the Library

## Books are Just the Beginning

Our John Fairbank Memorial Library offers students a comfortable environment for study and research. Staff provides individualized attention and an active approach to guiding you through library services.

Students also have access  
to other post-secondary  
institution libraries  
(with over a million  
publications available).



# Beyond The Classroom

At Booth UC, a key aspect of your education will be experiential learning. That is, learning by doing. By engaging students in hands-on experiences and reflection, you will be better able to connect theories and knowledge learned in the classroom to real-world situations.



### Internships

Psychology and Behavioural Sciences students are placed with organizations that work in areas such as community mental health, supportive counselling, and newcomer and refugee services. You are mentored and supported by an expert in the field, and Booth UC faculty, to expand your knowledge and skills.



### Field Placements

As a Social Work student, you will gain hundreds of hours working in field placements to better prepare you for a career as a Social Worker. You will also benefit from the unique way we match our students for practicum placement and have our core faculty established as the ones who serve as liaisons for all placements.



### Urban Service Learning (USL)

As a core requirement, all other Booth UC students take part in service learning. Focusing on social concerns, you'll step out of the classroom into the heart of Winnipeg where you will learn about the root causes of injustice while gaining valuable work and life experience.



# Salvationist Students

As The Salvation Army's only University College, Booth UC boasts a vibrant community of Salvationist students. In fact, having Army students from around the world creates an experience unique to Booth UC. We'd love to tell you more and welcome you to a supportive Salvation Army community in Winnipeg.

*"I'm glad I chose Booth UC because I've had so many opportunities to engage in events, and to meet amazing people. The community here is fantastic. My advice for anyone who is coming to Booth UC for the first time is to be open to new relationships and experiences."*

- Jessica MacKenzie, Salvationist (BA/22)



## Did you know?

Scholarships are available to incoming Canada and Bermuda Territory Salvation Army students, valued up to **50% off** your first year of tuition.



Choose from 4  
Salvation Army  
Corps in Winnipeg

## Your Path to a New Career

### Pre-professional Pathways

Start your pathway to professional programs at Booth UC. Studying at Booth UC prepares you for the admission requirements at other Canadian institutions. It's your first step toward programs that aren't currently offered at Booth UC such as law, education, and nursing. Once you've completed 1-4 years of study with us, you'll be ready to apply for your professional program of choice.

### Mature/Transfer Students

Are you over the age of 21 and thinking of going back to school?

Have you studied at another university but feel like making a change? Every year Booth UC accepts many mature students and transfer students. We are happy to help you navigate the process and make the transition as smooth as possible.



MENU



Mon - Thurs 9:30 to 4:30 Friday 9:30 to 1:30 | 290 Vaughan St, Lower Level

# Awards at a Glance

AWARD TYPE	AWARD TITLE	ELIGIBILITY	VALUE
------------	-------------	-------------	-------

## ENTRANCE SCHOLARSHIP

Entrance	Entrance Scholarship	New Students	\$2,000/year (\$1,000/term)
Entrance	President's Entrance Scholarship	New Students	Full Tuition for 1 year *\$2,000 award extended for 2nd year if criteria met

## PROGRAM SCHOLARSHIP

Business	Business Scholarship Red River College 2+2 Program	New/Transfer Students	\$2,000/year (\$1,000/term)
Business	Business Innovation Scholarship	New/Returning Students	\$4,000/year (\$2,000/term)
Auditor Partnership	Ritchie-Jennings Memorial Scholarship	New/Returning Students	\$1,000 - one-time award

## SALVATIONIST

Salvation Army African Territories	Major and Mrs. Festus Uko Abara Scholarship	New/Returning Students	\$4,000/year (\$2,000/term)
Salvation Army	Tuition Scholarship	New/Returning Students	\$2,000/year (\$1,000/term)
Salvation Army	Canada & Bermuda Territory Award	New Students	50% Tuition for 1 year
Program Award	John and Lorraine Gerard Scholarship	New/Returning Students	\$500 - one-time award

## VOLUNTEERISM

Volunteer	Community Impact Award	New/Returning Students	\$250/3 CHRS (max \$1,250/term)
Volunteer	Community Impact Award for Students from Frontier School Division	New/Returning Students	\$250/3 CHRS (max \$1,250/term)
Volunteer	Community Impact Award for Indigenous Students	New/Returning Students	\$230/3 CHRS (max \$1,250/term)

\* Continued on following page

# Tuition and Fees

## 2026-2027 ACADEMIC YEAR (April 1, 2026 - March 31, 2027)

Tuition and fees are calculated based on a number of factors including, but not limited to, the selection of course load, incidental fees, etc.  
(All amounts are shown in Canadian dollars.)

## CANADIAN AND PERMANENT RESIDENT STUDENTS

TUITION AND FEES*	PER COURSE
Tuition*	\$640
Course Fees (facilities fee, IT fee, practicum fee, library fee, student services fee) *	\$200
General fees (registration fee, copyright access fee, student access card fee) *	\$75

### PAYING YOUR FEES:

Billing and payment are on a term basis. Payments are due at the start of each term.

\* Subject to change



\* Continued from previous page

## OTHER (RETURNING)

Church Leadership & Mission	Donnelly Memorial Scholarship	Returning Student	\$500 - one-time award
Church Leadership & Mission	Reg Rowe Memorial Bursary	Returning Student	\$500 - one-time award
Church Leadership & Mission	Ruth Timmerman Memorial Scholarship	Returning Student	\$600 - one-time award
Social Work	Edgar and Fairie Halsey Memorial Scholarship	Returning Student	\$200 - one-time award
Social Work	Fisher Memorial Social Work Scholarship	Returning Student	\$1,000 - one-time award
Social Work	Knowles Family Bursary Fund	Returning Student	\$150 - one-time award
Student Life	B. G. Price Scholarship	Returning Student	\$250 - one-time award
Student Life	Gordon Brown Memorial Scholarship	Returning Student	\$200 - one-time award

## GRADUATING

Booth UC Graduand - 4yr BA	Harland Scholarship	Further Studies in Theological or Professional Disciplines	\$500 - one-time award
-------------------------------	---------------------	------------------------------------------------------------------	------------------------

## MATURE

Mature Student	Life long Learning Award	New Student	\$250/3 CHRS (max \$1,250/term)
Mature Student	Life long Learning Award for Students from The Winnipeg Adult Education Centre	New Student	\$250/3 CHRS (max \$1,250/term)



Needs-based bursaries are available to new and returning students. See our website for details.



We offer numerous scholarships and awards to help finance your education.

## INTERNATIONAL STUDENTS

TUITION AND FEES*	PER COURSE
Tuition*	\$1,225
Course Fees (facilities fee, IT fee, practicum fee, library fee, student services fee) *	\$200
General fees (registration fee, copyright access fee, student access card fee) *	\$75

Application Fee for International Students \$150

\* Subject to change

# Acknowledgement

We acknowledge that Booth University College is located on Treaty 1 Territory, the traditional lands and waters of the Anishinaabeg, Cree, Oji-Cree, Dakota and Dene peoples, and the original homeland of the Red River Métis Nation.

These Indigenous peoples have cared for and occupied this land for millennia, stewarding its resources and deriving life and meaning from its abundance. We celebrate their place in our community, their contributions to our collective well-being, and their role in bringing about a hopeful future for us all.



**Waldron Building (Main campus)**  
**290 Vaughan Street**



**Union Station campus**  
**123 Main Street**



**BOOTH**  
UNIVERSITY  
COLLEGE



**APPLY NOW!**

Contact Admissions for more information  
or to arrange a campus tour of our facilities:

**CAMPUS ADMISSIONS:**

Email: [Admissions@BoothUC.ca](mailto:Admissions@BoothUC.ca)

204-947-6701 ext. 701